



This report contains  
activities between the  
period of April 2025  
and March 2026

---

# **FIT TO ACHIEVE SICKLE CELL FOUNDATION**

**ANNUAL REPORT 2025/26**  
**April 2025 – March 2026**

---

[WWW.FITTOACHIEVE.ORG](http://WWW.FITTOACHIEVE.ORG)

# INSIDE STATEMENT

More than a diagnosis. A second chance.  
In 2025/26, FTA delivered a year of layered intervention.

We strengthened specialist access.

We reinforced medication adherence.

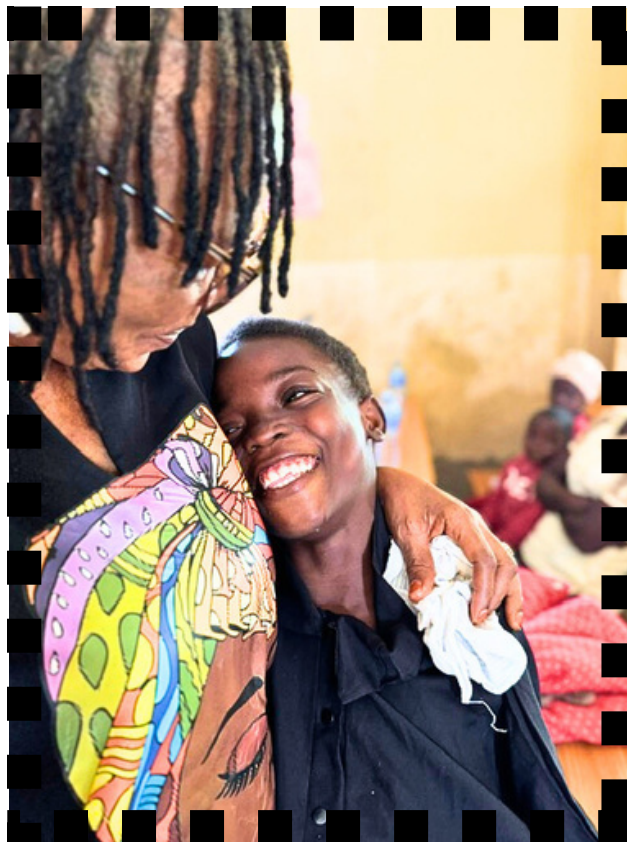
We embedded diagnostics into outreach.

We protected education.

We fed families with dignity.

We formalised impact tracking.

This report reflects a mature foundation, structured and impact-driven.



# CHAIR'S STATEMENT

As Chair of the Board, I am pleased to present the Annual Report for 2025/26. This year represents a step-change in delivery and governance.

The Board met quarterly in accordance with our governance framework, overseeing programme development, financial performance, risk management and strategic growth. We supported the delivery of a specialist-led clinic that identified high-risk children. We reviewed data outcomes in detail in a structured form. We strengthened partnerships that enhance both credibility and sustainability.

Given the life cycle of sickle cell and its lifelong impact on individuals, FTA remains modest in scale to ensure impact continues for our registered warriors, but we are increasingly disciplined in its execution.

On behalf of the Board, I thank our Founder, trustees, volunteers, specialist partners and donors for their commitment to children living with sickle cell disease

*Neil Suttie*  
Chair of Trustees

# MESSAGE FROM THE FOUNDER

Dear Friends, Partners and Supporters,

As I reflect on this year, I do so with both pride and clarity. Pride, because in 2025/26, we moved beyond support into structured, specialist-led intervention. Clarity, because the need of our warriors remains urgent, and our work is far from finished.

This year, we deepened our impact.

We hosted events but that was not all. We identified children at risk of stroke. We delivered diagnostic screening. We treated malaria and infections on site, preventing complications. We distributed 12 months of life-sustaining medication. We sponsored four children to remain in school through scholarships.

We embedded data tracking to measure our outcomes properly. For a small foundation, these are not minor steps. They are markers of maturity. Our November '25 specialist clinic demonstrated what becomes possible when expertise meets community trust. Over 60 children and young people were reviewed.

High-risk cases were detected. Mothers left empowered with knowledge that could quite literally save their child's life.

We are building a model that integrates health, dignity and opportunity.

Our partnerships with Ronnie Care Foundation, Ronnie Diagnostics, Spoonful by K Jollof, and all of our corporate supporters through Benevity strengthened both our reach and our credibility. These collaborations demonstrate that when organisations align around purpose, impact multiplies.

This year also demanded realism. Vaccine access remains constrained. Cost barriers continue to affect older children. System limitations persist. But we are not passive, we are advocates, partners and problem-solvers.

Above all, I remain inspired by our warriors; the child who still dreams of becoming a nurse and a teacher, the mother who now recognises early warning signs, the teenager who continues school despite hospital admissions. Their courage defines our mission.

To our trustees, volunteers, partners and donors, thank you for believing in this work.

You are part of every life strengthened this year.

As we look ahead, our commitment is simple:

- To increase our clinical intervention.
- Prevent mortality from this disease.
- To strengthen education and empower more communities to lead healthy lives.
- To improve vaccine access.
- To measure what matters.
- And to ensure that every child we serve has the opportunity not just to survive, but to **achieve**.

With determination and gratitude,  
*June Okochi*

## **Founder**

Fit to Achieve Sickle Cell  
Foundation



# ABOUT FTA

***Fit to Achieve Sickle Cell Foundation supports children and young people living with sickle cell disease in underserved communities across Nigeria and West Africa.***

Our model integrates:

- Specialist clinical outreach
- Routine medication support
- Diagnostic screening
- Education & prevention
- Hygiene & dignity kits
- Scholarships
- Advocacy & storytelling
- Art therapy and art workshops
- Home visits and community outreach events
- Mental health support and mentoring

Governed by a formal Board structure, we operate with transparency and accountability.

# 2025/26 IMPACT SNAPSHOT

This was not a single-event year – it was a structured programme cycle.



- Quarterly outreach events delivered
- A specialist haematology clinic
- An integrated wellbeing & medication event
- Four scholarship children supported, 2 children over 3 years and 2 children now going into their 2nd year.
- 60+ clinical reviews and individualised care plans
- 58 children and young people tracked via structured outcome measurement
- Diagnostic ultrasounds delivered
- Malaria testing integrated into outreach
- 15 new warriors registered
- 9,369 organic digital views on social media
- 861 followers (+23.8%)

# MARCH WELLBEING & MEDICATION EVENT

At the beginning of the financial year, FTA delivered an integrated wellbeing and medication compliance event.

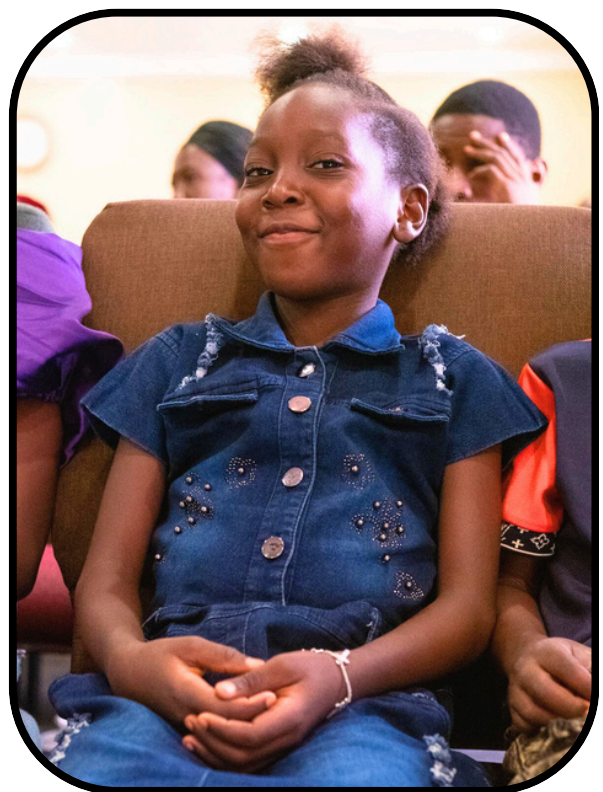
45 children and their families attended and received :

- 3 months' routine medications
- Multivitamins
- Hygiene packs

## **EDUCATION REINFORCED:**

- Crisis prevention
- Medication adherence
- Early escalation thresholds

This event also marked the formalisation of baseline outcome tracking.



# DIAGNOSTICS & MALARIA MANAGEMENT

Through partnership with Ronnie Care Foundation and Ronnie Diagnostics:

- Full Blood Count for all warriors
- Abdominal ultrasounds were provided to 4 scholarship beneficiaries
- Free malaria testing conducted for all attending warriors
- On-site malaria treatment and other treatment delivered where necessary

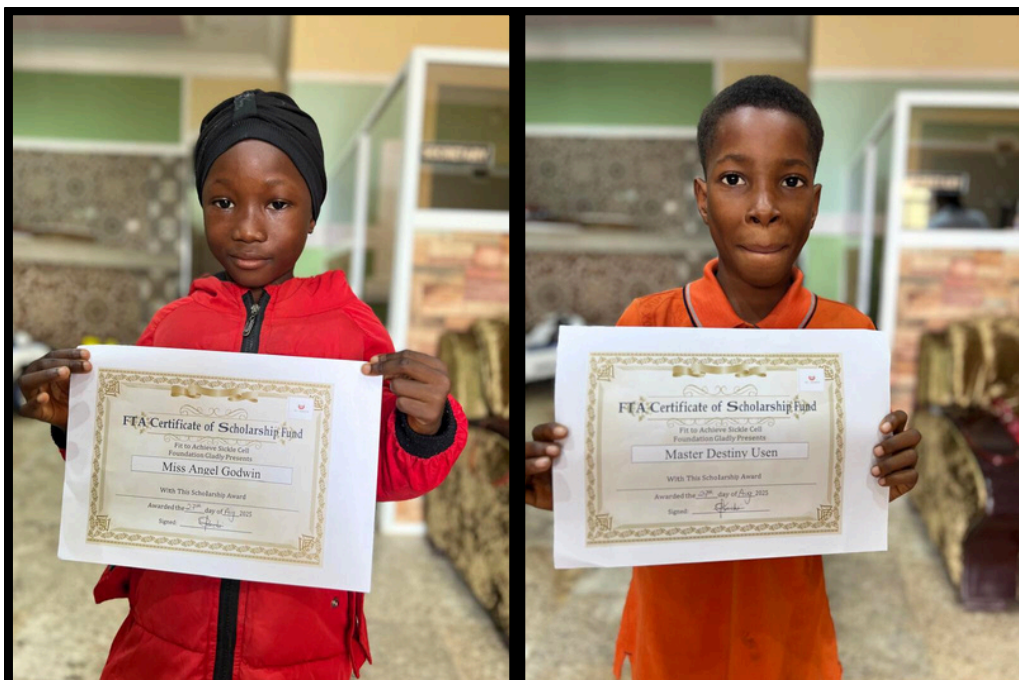
Malaria remains a serious co-morbidity for children living with sickle cell disease. By embedding diagnostics into our outreach, FTA moved from awareness to medical-detection. Malaria prevention kits were also provided to all families.

# SCHOLARSHIPS: PROTECTING FUTURES

FTA supported four scholarship children during 2025/26.  
Scholarship beneficiaries:

- Received school fee support
- Maintained education continuity
- Received clinical follow-up during outreach

Data suggests scholarship children experienced lower school absence compared to peers. All beneficiaries high performing academically and generally better health outcomes. Education is protective medicine.



# COLOURS OF COURAGE: ART & MENTAL WELLBEING

Building on our established art therapy initiative, we continued creative workshops supporting emotional resilience. In April 2025, our art workshops provided:

- An opportunity for expression beyond illness
- Confidence building
- Community and peer to peer connection
- Art as medicine and healing, giving children a space to be creative, joyful, play with colours and imagination.

For children living with chronic pain, creativity restores normalcy.



# FTA's FLAGSHIP SPECIALIST HAEMATOLOGY CLINIC NOVEMBER 2025

*Led by Nurse Funmi Adenekan, Specialist Haematology Nurse, Homerton Hospital*

Of 60+, four high-risk cases identified  
30 thermometers distributed  
12 volunteers supported delivery

Assessments included:

- Relevant diagnostics and bloodwork
- Full Blood Count Review
- Blood pressure monitoring
- Temperature check
- Oxygen saturation
- Glucose testing
- BMI
- Physical examination



This intervention elevated FTA's clinical credibility.

Four children were identified as clinically high-risk, including two at risk of stroke. Without specialist intervention, these risks may have progressed undetected. **We are extremely grateful to Nurse Funmi for her outstanding and excellent service to FTA. She was the backbone to this successful flagship programme.**

# STORY: A MOTHER'S FEAR

*When Amina arrived at the clinic, she thought her son's chest pain was "just another crisis."*

*During his assessment, dangerously high blood pressure was detected. Further review confirmed he was at risk of stroke.*

*No one had explained that chest pain could escalate to something life-changing.*

*That day, she left with:*

*A revised care plan  
Medication guidance  
Clear hospital thresholds  
A thermometer and training  
She did not leave cured.  
She left informed.*

*And that changed everything.*



# CHILD VOICE: “WHEN I GROW UP”

*“My name is Samuel. I am 10 years old.*

*Sometimes my chest hurts and I miss school. I don’t like missing school. I want to be a pilot one day.*

*At the FTA clinic, the nurse checked my blood and my oxygen.*

*She told my mum why*

*I need to take my medicine every day and drink more water.*

*They gave my mum a thermometer and told her when to go to the hospital.*

*I still have sickle cell.*

*But now I feel like someone understands it”.*



# PARTNERSHIPS



*Spoonful by K Jollof provided free meals for warriors and families at every outreach event.*



Ronnie Care Foundation & Ronnie Diagnostics provided free ultrasounds, malaria testing and discounted laboratory support.

Nutrition supports immunity and preserves dignity. Spoonful by K Jollof fed our warriors this year at each event.

Benevity Corporate Donors: Corporate donations via Benevity strengthened inflow during Q3 allowing us to implement a high standard of clinical care in the community.

# MEDIA & ADVOCACY

During 2025/26, FTA received national media recognition highlighting:

- Community outreach
- Art therapy empowerment
- Specialist nurse collaboration

Media coverage within this financial year strengthened public visibility and donor confidence.

Advocacy reduces stigma. Visibility builds sustainability

To read the publications, click on the links below:

<https://www.thisdaylive.com/2025/06/19/fit-to-achieve-sickle-cell-foundation-brings-hope-to-patients/>

<https://www.vanguardngr.com/2025/06/fit-to-achieve-sickle-foundation-empowers-children-with-art-therapy/>



# SUSTAINABILITY AND IMPACT

This year, we strengthened the lives of our warriors by moving beyond short-term support into structured protection and empowerment. Through specialist clinical reviews, diagnostic screening, malaria testing, routine medication supply, hygiene support, scholarships for four children, and feeding families with dignity at every event, we have reduced preventable crises, improved school continuity, and increased parental confidence in managing sickle cell at home. But our mission is not to create reliance – it is to build resilience. By equipping mothers with practical knowledge, clear escalation thresholds, thermometers, medication education, and school advocacy tools, we are empowering families to recognise complications early, act confidently, and advocate for their children independently. Without this layered support, the risks are significant: undetected stroke risk, unmanaged infections, repeated hospitalisation, preventable organ damage, prolonged school absence, educational dropout, and increased financial and emotional strain on families. Our goal is not to stand in the place of the system forever – it is to strengthen families so that, over time, they can live well, make informed decisions, and pursue their ambitions with less dependence and greater confidence, fully aligned with our belief that every child born with sickle cell can achieve their life goals with the right foundation of care.

# OUR VOLUNTEERS: THE HEART OF FTA

Behind every clinic, every aid bag, every data sheet and every child welcomed with a smile stands a committed group of volunteers who give their time, energy and compassion without expectation. Throughout 2025/26, our volunteers supported registration, logistics, clinical flow, medication distribution, art workshops and family coordination. Their presence ensured our outreach events were not only clinically structured but warm, organised and dignified. For a small foundation, volunteer commitment is not supplementary, it is essential.





This year, we were especially proud to formally recognise Ruth and Oge for their long-standing service and dedication to FTA. Their consistency, reliability and quiet leadership over the years have strengthened our operations and deepened trust within the warrior community. In awarding and celebrating them, we honour not only their individual contribution but the spirit of service that sustains our mission. We are profoundly grateful for every volunteer who continues to stand with us as we turn pain into possibility.

# FINANCIAL SUMMARY

## April 2025 - March 2026

During the 2025/26 financial year, FTA's UK account opened with a balance of £1,693.75, received £1,452.00 in income, and recorded expenditure of £2,868.33, resulting in a closing balance of £277.42.

In Nigeria, the Foundation began the year with NGN2,737,648.93, generated income of NGN5,042,915.56, and spent NGN2,612,554.00, closing the year with a balance of NGN5,168,010.49.

---

### **Spend by Category (Overall)**

**Programme Delivery: ~70%**  
**People Costs (Volunteers & Coordinators): ~20%**  
**Operations & Admin: ~10%**

---

FTA maintained a strong commitment to transparency and impact throughout the 2025/26 financial year. While UK income remained modest, significant growth in funding within Nigeria—primarily through corporate donations from Benevity—enabled the Foundation to expand programme delivery and reach more beneficiaries.

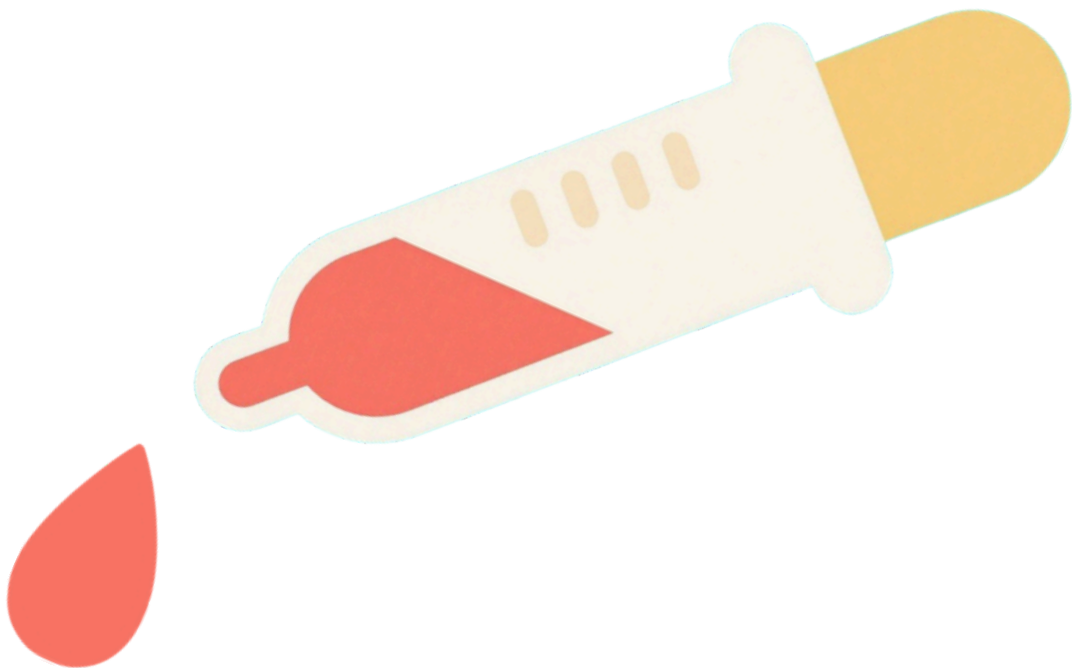
Expenditure was largely focused on frontline programmes, including healthcare clinics, youth workshops, and wellbeing initiatives, alongside essential operational and staffing support. This ensured that the majority of resources were directed towards delivering meaningful impact for children and families affected by sickle cell.

The Foundation closed the year with a stable financial position overall, with strengthened capacity to deliver future programmes. To build on this progress and sustain growth, FTA will prioritise increased fundraising efforts in the year ahead while continuing to uphold strong financial governance and accountability.

# STRATEGIC CHALLENGE: VACCINE ACCESS

Free pneumococcal vaccines remain limited to children under 18 months. Older children face costs of ~£40 per dose.

FTA continues to pursue advocacy and partnership routes to improve access.



# LOOKING AHEAD

1. Secure sustainable vaccine access
  2. Expand specialist clinic model
  3. Strengthen scholarship support
  4. Strengthen data measurement
  5. Launch Warrior Mum economic empowerment pilot
  6. Broaden West African partnerships
- FTA remains dedicated to driving impact and positive outcomes for our warriors.



# CLOSING

To our Trustees, Volunteers, Patrons, Friends, Donors,  
Ronnie Care Foundation,  
Ronnie Diagnostics, Spoonful by K Jollof, Benevity  
corporate donors and individual supporters  
You are part of every life protected this year.  
Together, we are turning pain into possibility.

